



WASTE CONTROL SPECIALISTS

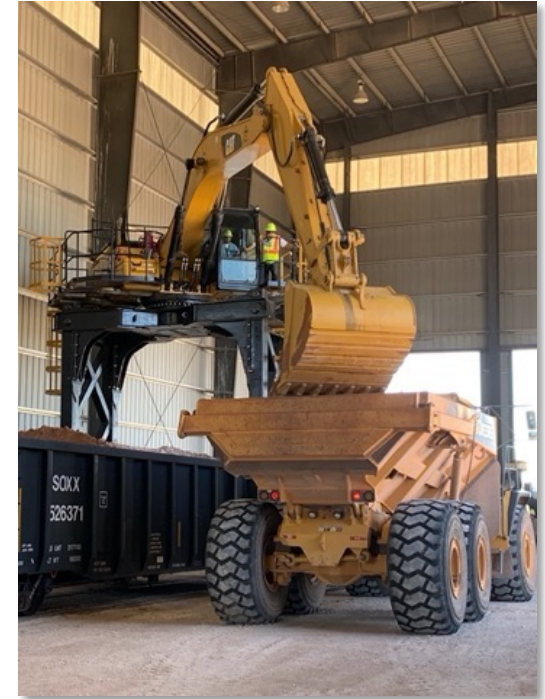
Waste Control Specialists
Site Overview
LLW Forum – Oct 2023



David Carlson
President
865-201-3191
dcarlson@wcstexas.com

What We Do

- ▶ Safe Disposal of Low-Level Radioactive Waste (LLRW)
- ▶ Essential service for:
 - Nuclear Power Plants
 - Hospitals and Research Laboratories
 - Oil and Gas NORM
 - Industrial Customers
 - US Government (DOE, DOD, etc.)



WCS Site – Andrews TX

14,000 acres (permitted area is 1,400 acres)
4 landfills, treatment facilities, rail access



Byproduct Facility

Federal Facility

Hazardous Waste Landfill

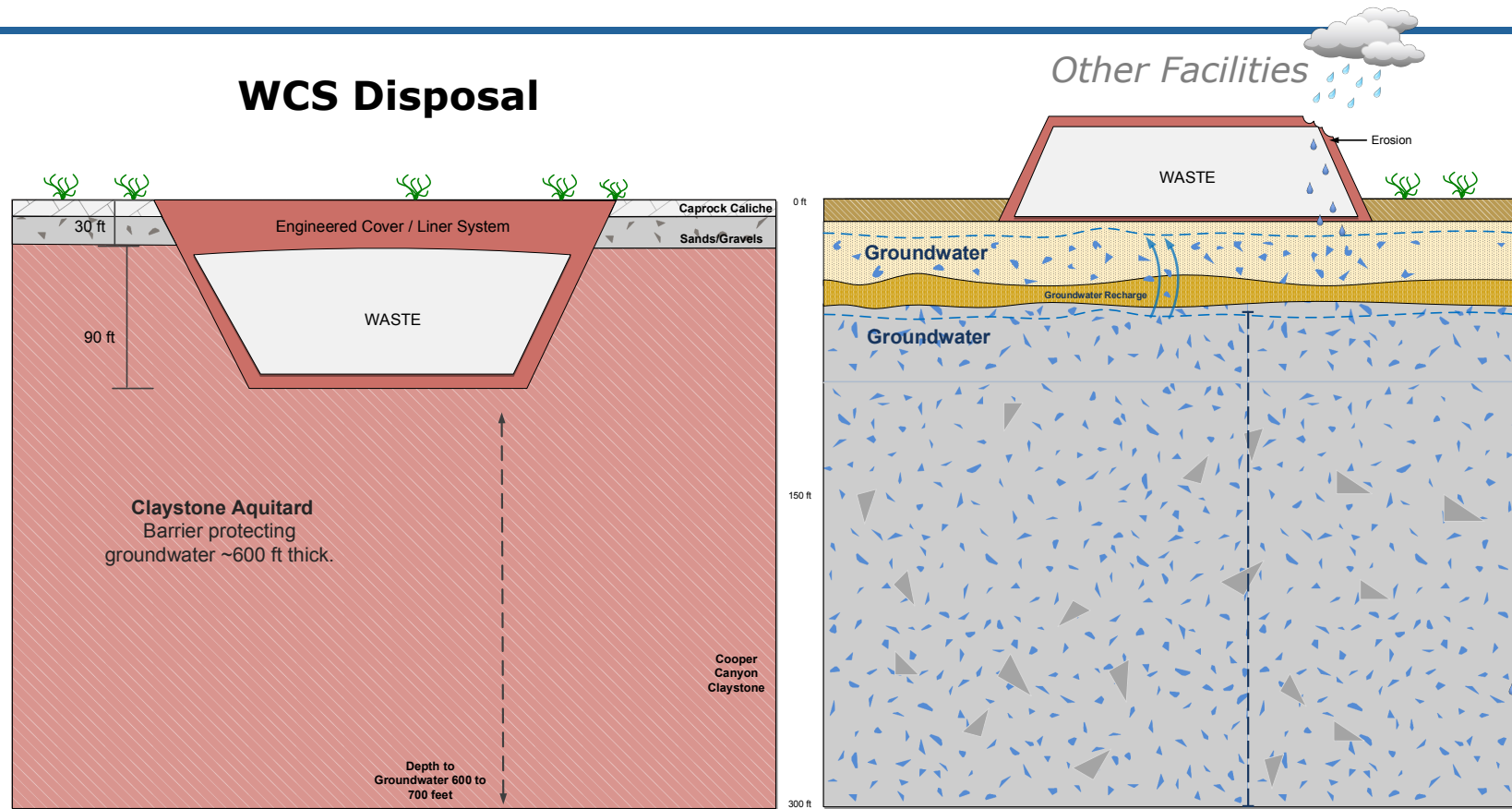
Compact Facility

Administration Buildings

Treatment Facilities

Rail Offload

WCS Environmental Protection (vs. Generic Facility)



Key Attributes of WCS site:

- 1) Sub-Grade Design
- 2) Natural Claystone Barrier
- 3) No viable pathway to groundwater

- ▶ WCS Performance Assessment examines site geology, surface water and groundwater, future weather changes, residential and intrusion scenarios, and future land uses
- ▶ Facility meets Texas regulatory requirement for protection for one million years



WCS is the Newest and Most Robust LLRW facility in the US

Compact Waste Facility

Texas owned
Privately-developed and operated
Regulated by TCEQ (2 on-site inspectors)
Opened in 2012



CWF Phase 2a Cell Construction

CWF Phase 2a

- Construction started 2/15/23, with projected construction completion 11/22/2023
 - Poly liner installation is complete
 - Concrete liner install started
 - In service 02/29/2024
- Constructed space summary – projected on 02/29/2024
 - Phase 1 will have over 100,000 cubic feet remaining
 - Phase 2a provides 425,000 cubic feet of new space
 - 525,000 cubic feet of CWF disposal space available



Compact Facility Status – TCC Meeting Items

CWF Licensed Capacity

- 9,000,000 ft³
- 3,890,000 Ci (decay corrected)
 - Can be increased to 8,000,000 Ci upon request and TCEQ approval

Current CWF Disposal TX Fiscal Year to date – 9/1/2022 to 8/31/2023 (12 months)

- 54,336 ft³
- 106,990 Ci (decay corrected)

Total CWF LLRW Disposal since inception – to 8/31/2023 (11 years)

- 307,687 ft³ (3.4% of licensed capacity)
- 583,668 Ci decayed (28 % of licensed capacity)

Other Licensed / Permitted Capacity

- *Federal Waste Facility – 26,000,000 ft³*
- *Exempt Facility – 62,000,000 ft³*
- *Byproduct Facility – 810,000 ft³*
- *WCS Site Total ~ 100,000,000 ft³*

License Renewal / Amendment 40

Amendment 40

■ Summary/Benefits

- Authorizes LANL TRU removal from FWF to Perma-Con
- RCRA Exempt RS-5.0.0 changes
 - Annual RCRA cell volume limit increase from 3.5M ft³ to 10M ft³
 - Adds some additional isotopes
- Adds financial assurance funding for new Phase 2A cell
- Environmental monitoring changes to align with new CWF Phase 2A cell

■ Status

- Submitted to TCEQ – 6/9/23
- Anticipated approval by TCEQ – by year end

WCS License Renewal – Expiration September 10, 2024

- Renewal application submittal required 1 year in advance of license expiration date
- Submitted 8/28/23 – on schedule
- In timely renewal status

Federal Waste Facility



Federal Waste Facility - DU Disposal

June 2023 - 60 cylinders from Paducah

August 2023 – 120 cylinders from Portsmouth

September 2023 – 120 cylinders from Paducah



Federal Waste - LANL TRU Waste

Storage

- Continued storage in FWF, 74 Standard Waste Boxes remain inside 35 Modular Concrete Containers (MCCs)
- Texas AG letter to DOE 4/11/23
- DOE responses to AG provide plan for removal
 - Removal – Sept 2023 – Feb 2024
 - Offsite shipment – July 2026 – Dec 2026

Relocation to Surface Facility

- Phase 1 – prepare to move waste from FWF:
 - Construction of “PERMA-CON” structure completed
 - Equipment installation completed June 2023
 - Mock-ups completed July 2023
 - WCS ready to move LANL TRU
- Phase 2 – operations, expected in 2024

Future

- Phase 3 (New) – Offsite shipment support to WIPP in 2026
 - DOE is evaluating “overpacking” at WCS as a form of treatment to remove D001 waste code



Transportation Casks

- ▶ The most modern and state-of-the-art casks in service
- ▶ Provides protection of the public and the environment in the event of the most severe accident scenarios
- ▶ Regulated by the Nuclear Regulatory Commission and the Department of Transportation



WCS Local Support

Our Staff Lives in the Community

- Largest private employer in Andrews county
- 160 employees, primarily in Texas
- Employees are involved in the community

Local Engagement

- WCS office and staff presence in center of town
- Tours and education events

Financial Support

- Surcharges (up to 31.25% of gross receipts)
 - ◆ \$76.5 million to Texas (11 years) = \$7M/y
 - ◆ \$17.3 million to Andrews (11 years) = \$1.6M/y
 - ◆ Grand Total: \$93,816,823
 - ◆ Paid in addition to normal agency cost reimbursement and other fees and taxes
- Significant contributions to Community Activities (in addition to surcharges)
 - ◆ Scholarships, Education Foundation, Public Safety, Sports Teams

